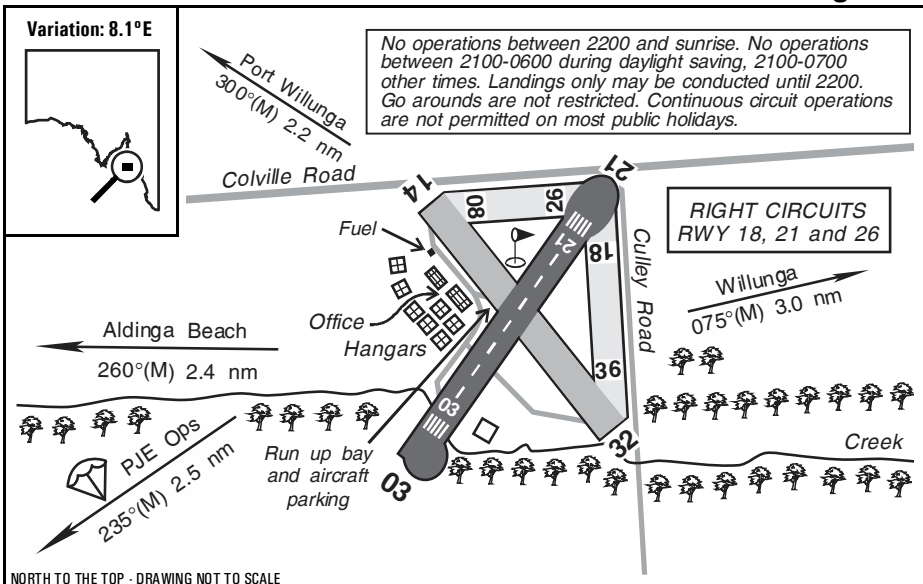


Warning: It is a requirement to check  
airstrip condition and details with owner

# Aldinga, SA



NORTH TO THE TOP - DRAWING NOT TO SCALE

<b>Elevation:</b>	110 Feet AMSL	<b>Time Zone:</b>	UTC + 9.5
<b>GPS Position:</b>	35° 17' 20" South 138° 29' 39" East	<b>Area Briefing:</b>	50
<b>WAC Charts:</b>	Adelaide (3458), Port Augusta (3459)	<b>ALA Code:</b>	YADG
<b>Owner/Operator:</b>	Aldinga Aviation (08) 85576117, <a href="mailto:info@aldingaaviation.com.au">info@aldingaaviation.com.au</a>		
<b>Strip Directions:</b>	03-21	08-26	14-32 18-36
<b>Strip Lengths:</b>	912 M (excludes turning nodes)	500 M	820 M 600 M
<b>Strip Surface:</b>	Sealed	Grass	Gravel Grass*
<b>Windsock:</b>	Yes	*Grass strips not maintained	
<b>Strip Markers:</b>	Nil		
<b>Lighting:</b>	Runway 03-21 PAL and SMS activation, contact (08) 85565404 for details		
<b>Fuel:</b>	Yes - avgas bowser, 24/7 credit card swipe, Mastercard or Visa only		
<b>Procedures And Remarks:</b>	CTAF-ARFU 127.15. Adelaide Centre 130.45 (in the circuit). HF 3461/6565/8822. Training aircraft operate from this airfield, multiple runways may be in use. Animal and bird hazard may exist. Beware hills to south, fences, trees before the threshold of runway 32. Caution: PJE operations. Operations off sealed surfaces may be hazardous. After heavy rain please contact the operator for runway conditions. No landing fees apply to private operators. Parking fee \$5.00 per night. Flight office and kitchen are open 7 days a week, excluding Christmas Day, Boxing Day and New Years Day. Home made cakes, snacks and cappuccinos available. Council and EPA curfew and noise abatement rules apply. Latest information: contact Aldinga Aviation (08) 85576117. Permission required. Adelaide Biplanes is a tenant (08) 85565404. Operator website: <a href="http://www.aldingaaviation.com.au">http://www.aldingaaviation.com.au</a> . Cross check details with ERSA.		